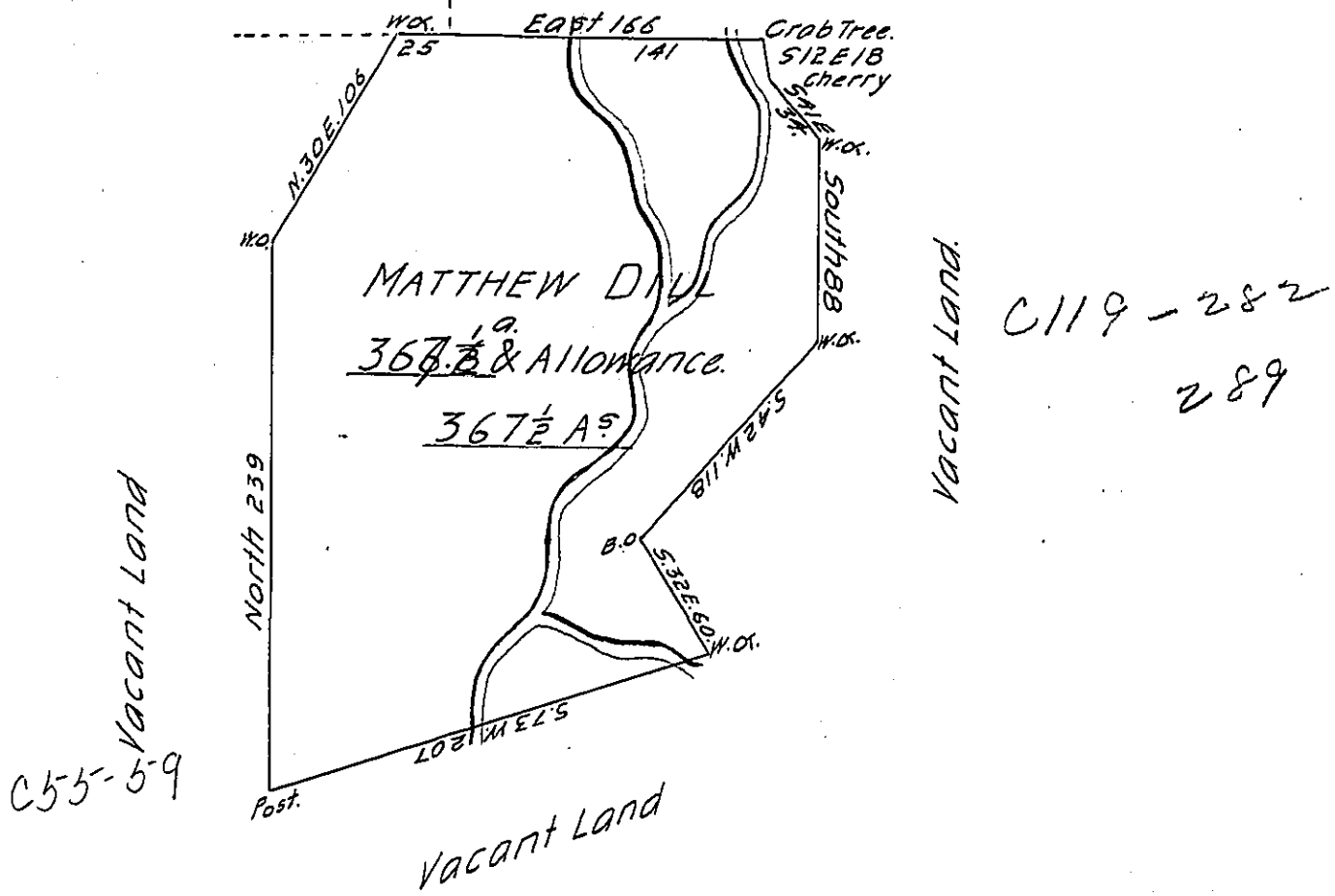


Joshua Williams Vacant Land. C119-282  
289-265'



Survey'd to Matthew Dill Esq<sup>r</sup> on the 27<sup>th</sup> Day of November 1773. The  
 above described Tract of Three hundred & sixty <sup>seven</sup> ~~six~~ Acres & an half of  
 an Acre & the Usual Allowance of six p-ct Situate on Dills Branch leading  
 into the South Branch of Tapp Lick Creek about two Miles from the Mouth of  
 Said Branch in Westmorland County. By Warrant of the 25<sup>th</sup> Day of March  
 1773.

p= Joshua Elder D.S.

To John Lukens Esq<sup>r</sup> S. Gen<sup>l</sup>

IN TESTIMONY that the above is a copy of the original remaining on file in  
 the Department of Internal Affairs of Pennsylvania, made  
 conformably to an Act of Assembly approved the 16th day of  
 February, 1833, I have hereunto set my Hand and caused  
 the Seal of said Department to be affixed at Harrisburg,  
 this ninth day of August 1904.

*James R. Brown*  
 Secretary of Internal Affairs.